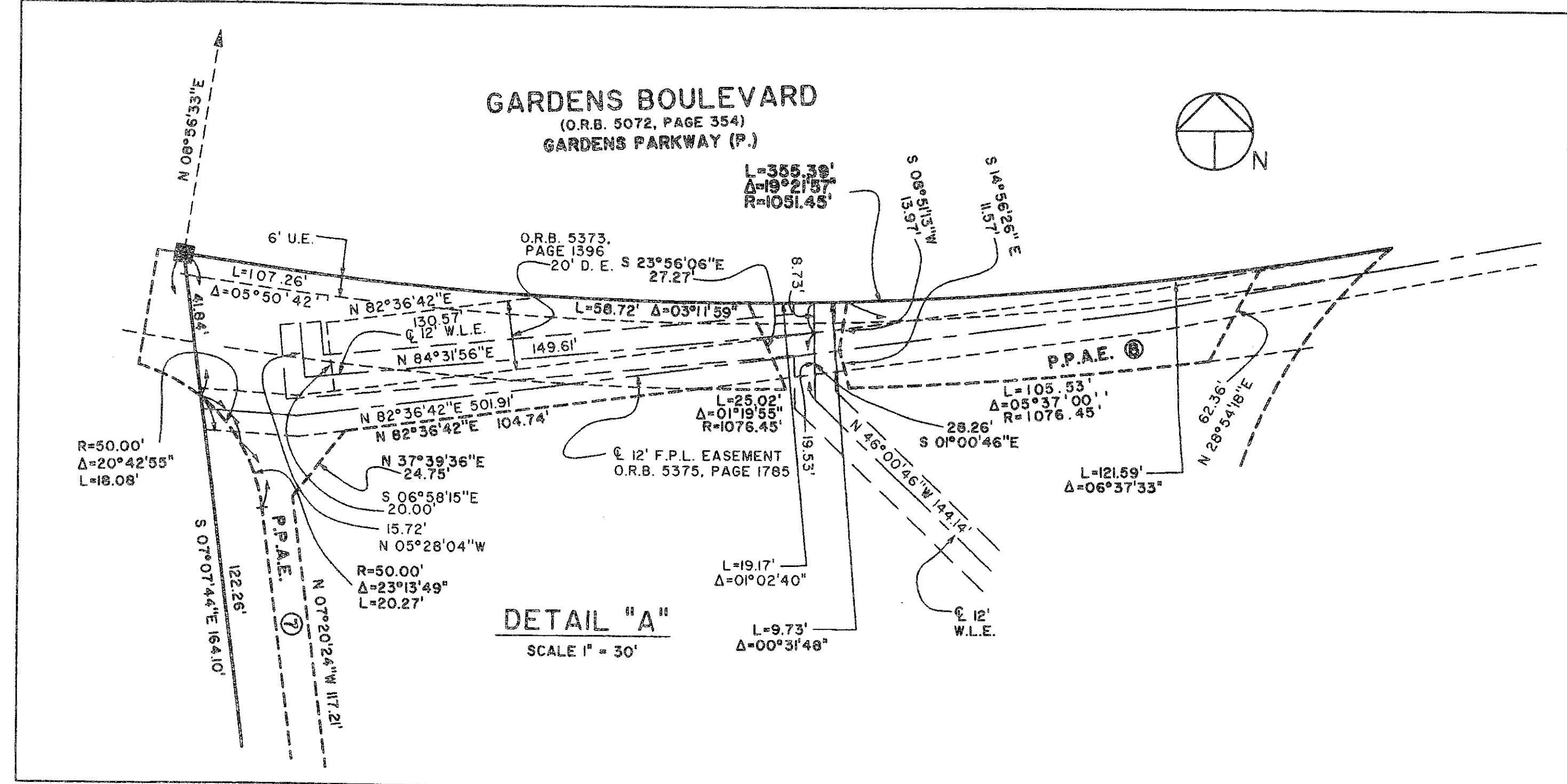
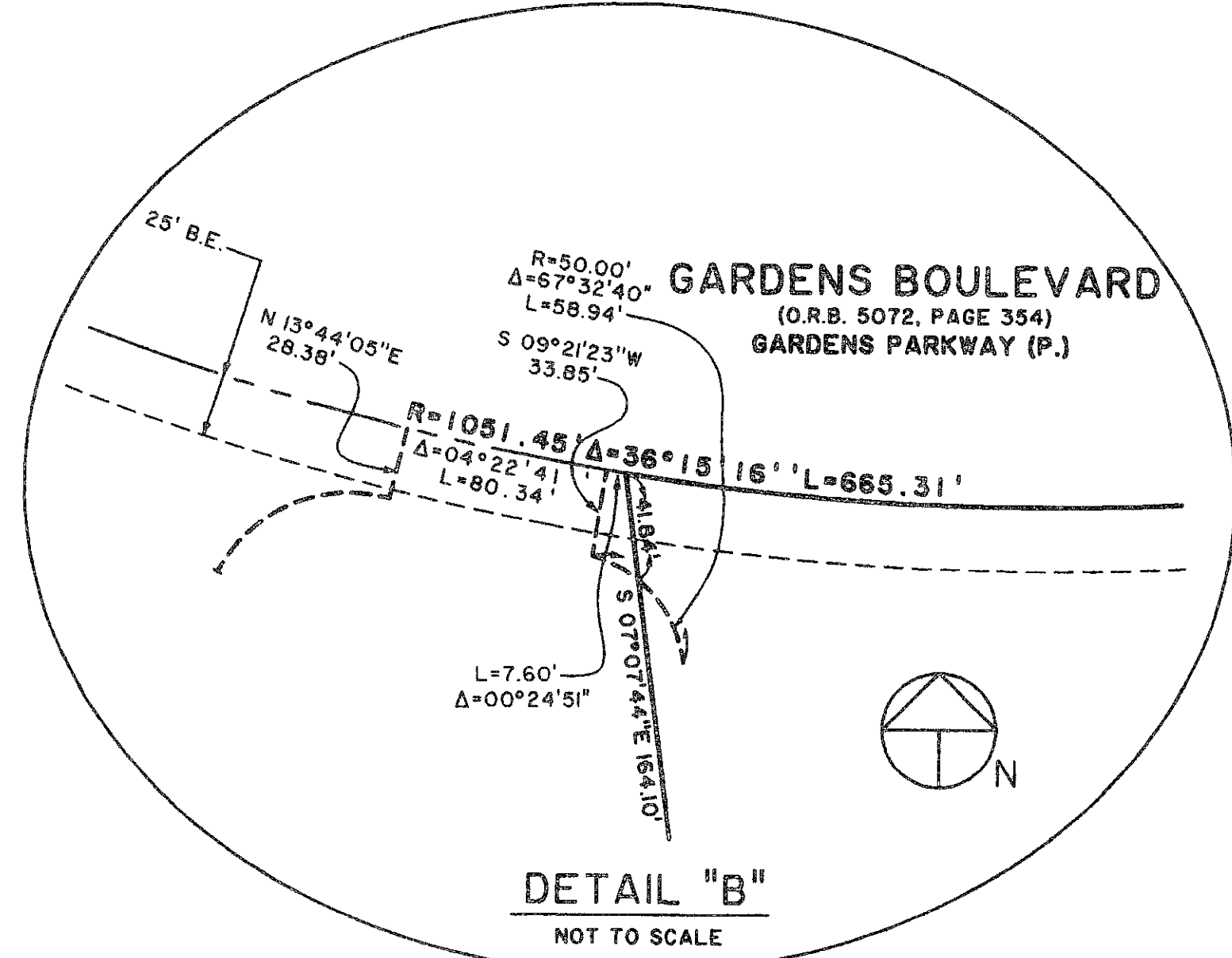
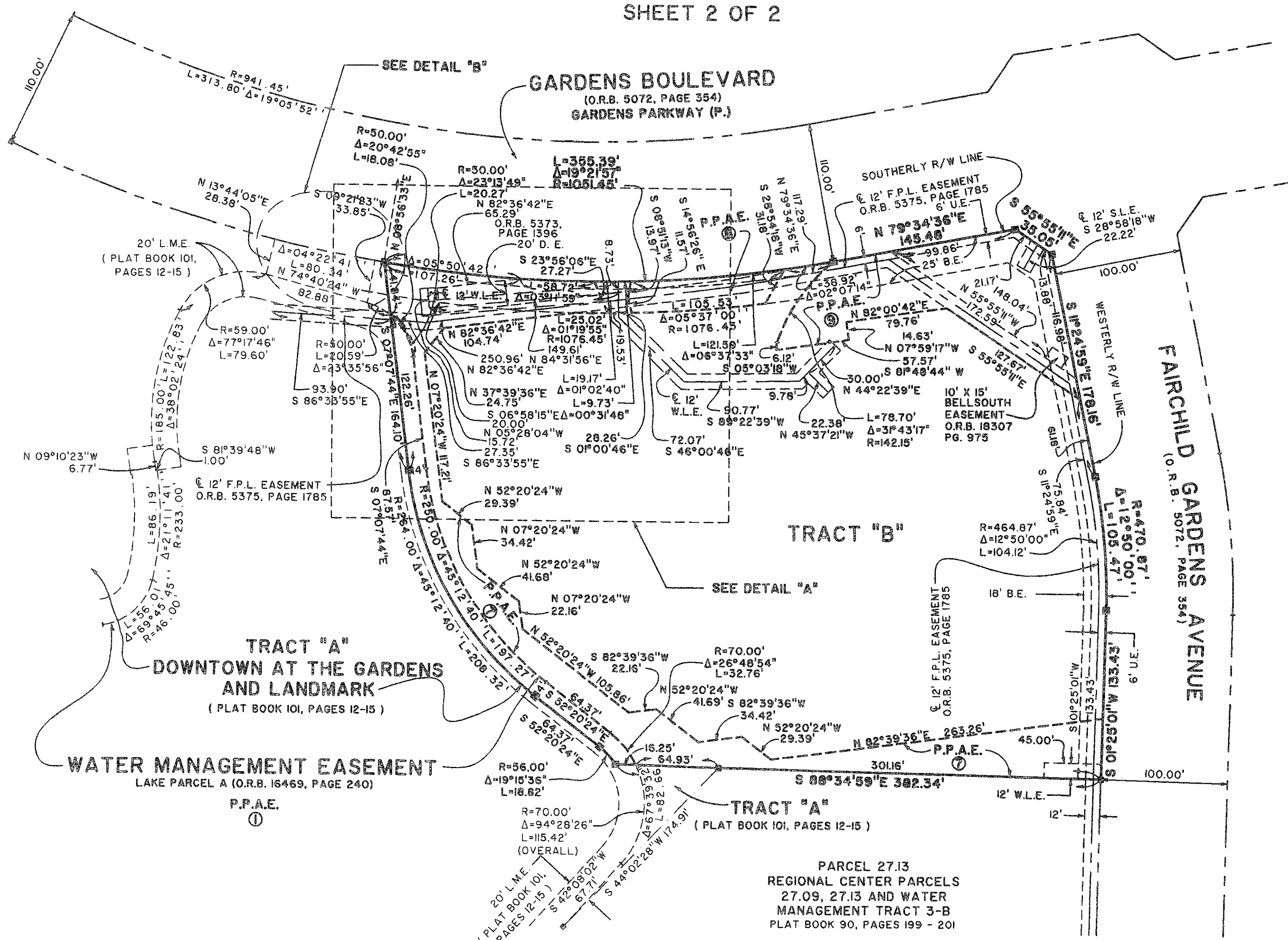


LANDMARK AT THE GARDENS

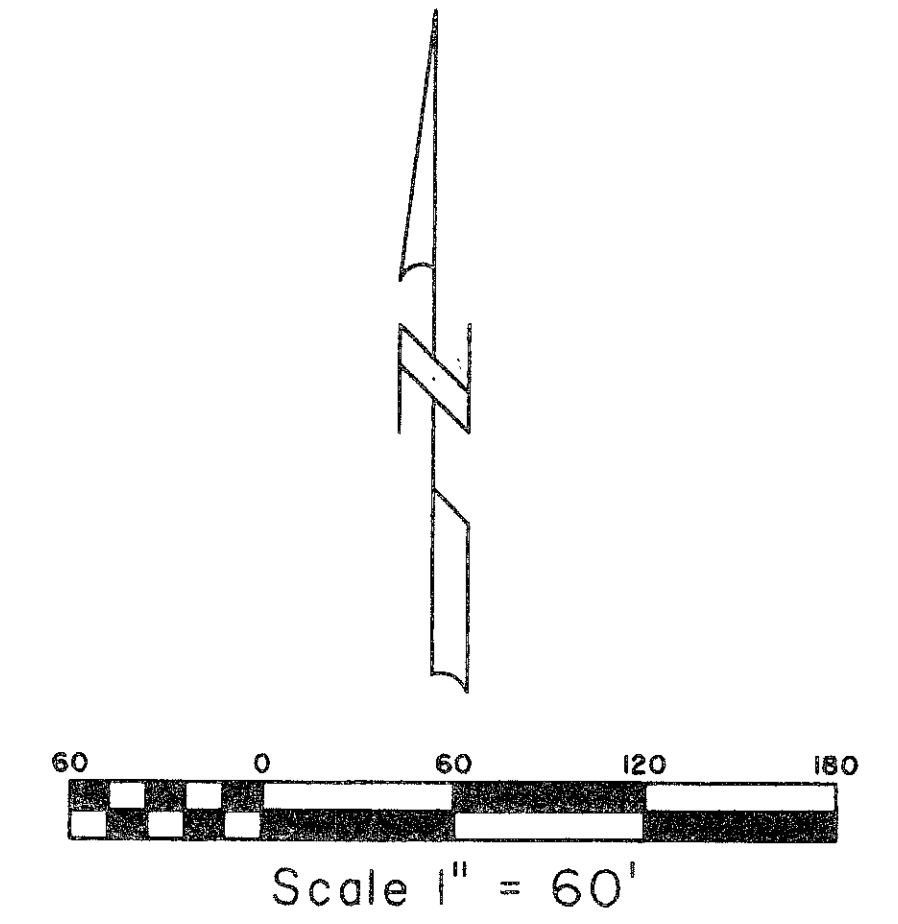
LYING IN SECTION 6, TOWNSHIP 42 SOUTH, RANGE 43 EAST, CITY OF PALM BEACH GARDENS,
 PALM BEACH COUNTY, FLORIDA, BEING A REPLAT OF TRACT "B", DOWNTOWN AT THE GARDENS AND LANDMARK
 AS RECORDED IN PLAT BOOK 101, PAGES 12 THROUGH 15, PUBLIC RECORDS OF PALM BEACH COUNTY, FLORIDA.
 SHEET 2 OF 2

STATE OF FLORIDA SS
 COUNTY OF PALM BEACH
 THIS PLAT WAS FILED FOR RECORD AT _____
 M. THIS _____ DAY OF _____ 2006
 AND DULY RECORDED IN PLAT BOOK NO. _____
 ON PAGE _____
 SHARON R. BOCK
 CLERK & COMPTROLLER
 BY _____ D.C.



AREA TABULATION (P.P.A.E. ⑦ - ⑨)

NPBCID UNIT NO. 19	ACRES
⑦ = 0.53	ACRES
⑧ = 0.07	ACRES
⑨ = 0.34	ACRES
TOTAL = 0.94	ACRES



Landmark Surveying & Mapping Inc.
 1850 Forest Hill Boulevard
 Ph. (561) 433-5405 Suite 100 W.P.B. Florida
 LB # 4396

LANDMARK AT THE GARDENS